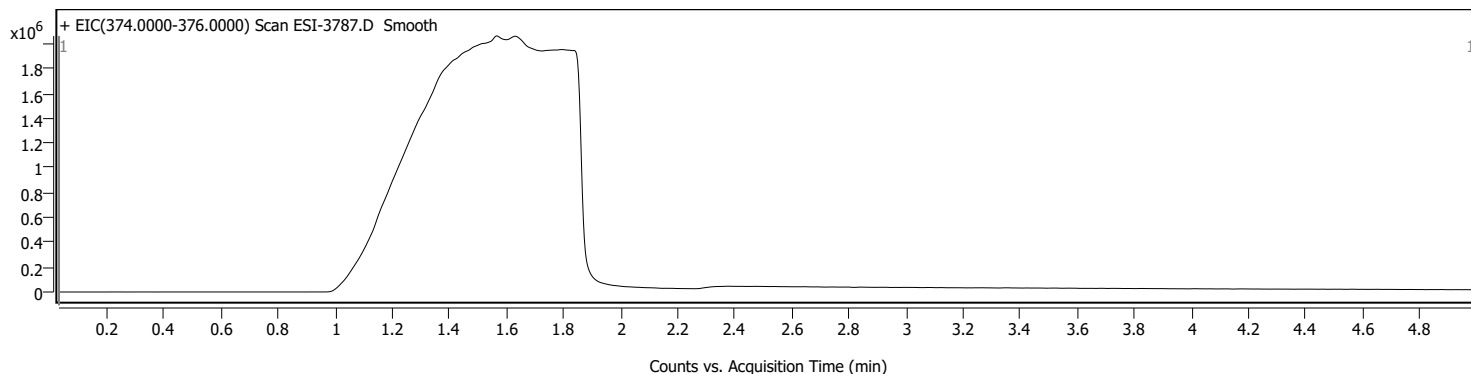
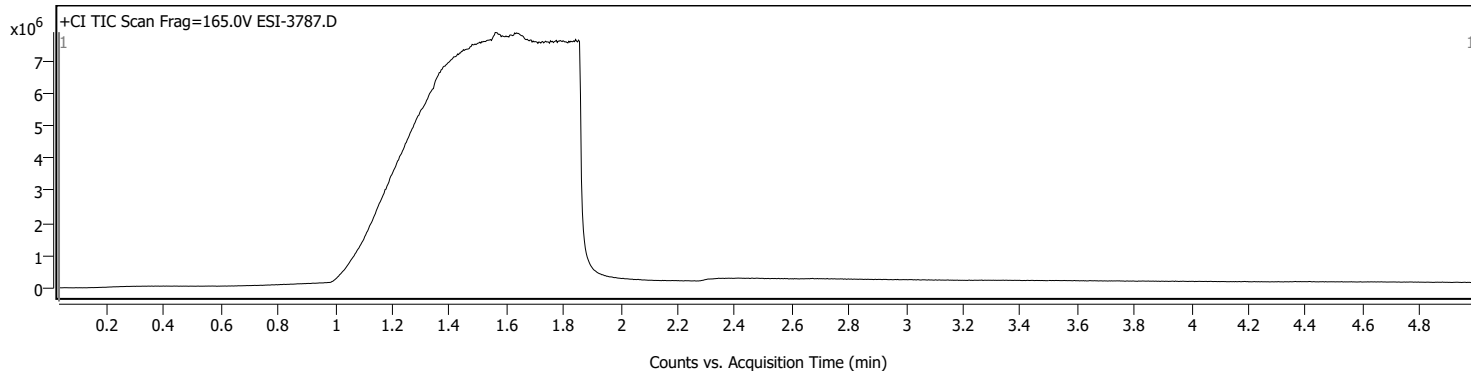


# Analysis Report

## Sample Information

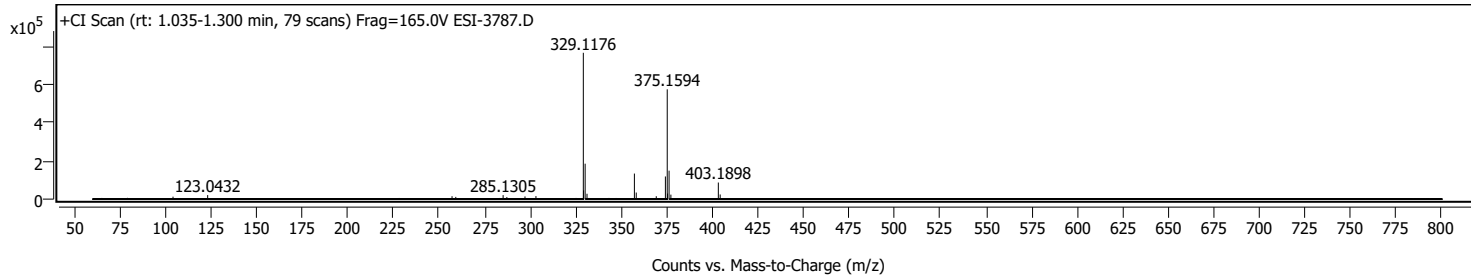
Name	AS064/methane	Data File Path	S:\Data\CI-MS\ESI-3787.D
Sample ID		Acq. Time (Local)	10/2/2023 9:21:49 AM (UTC+01:00)
Instrument	GCMS	Method Path (Acq)	C:\MassHunter\GCMS\1\methods\PCI_Probe_Slam_NEW.M
MS Type	QTOF	Version (Acq SW)	MassHunter GC/MS Acquisition 10.1.49 02-Nov-2020 Copyright © 1989-2020 Agilent Technologies, Inc.
Inj. Vol. (ul)	1	IRM Status	Success
Position	1	Method Path (DA)	S:\Data\CI-MS\ESI-3787.D\Results\Qual\Version4\default.m
Plate Pos.		Target Source Path	
Operator		Result Summary	

## Sample Chromatograms



## Sample Spectra

### + Scan (rt: 1.035-1.300 min)



### Spectrum Peaks

m/z	Z	Abund	Abund %	m/z (Calc)	Diff (ppm)	Ion Species	Formula	Ion Type
104.0486		12794	1.67					
123.0432		21097	2.76					
257.1015		15154	1.98					
259.1466		11640	1.52					
285.1305		20877	2.73					
287.1776		10792	1.41					
297.1266		13956	1.82					
303.1364		15872	2.07					
329.1176	1	765279	100.00					
329.2743		45790	5.98					
330.1202	1	185176	24.20					
331.1462		27977	3.66					
357.1477	1	133592	17.46					
358.1507	1	34511	4.51					
369.1472		15168	1.98					
374.1505		118462	15.48					
375.1594	1	574129	75.02					
375.3241		29158	3.81					
376.1619	1	148892	19.46					
377.1643	1	23421	3.06					
403.1898	1	86773	11.34					
404.1929	1	24302	3.18					

# Analysis Report

MassHunter Qual 10.0  
(End of Report)